

1970 Dodge Charger

Factory Power Sunroof Cars - Option Code M51

Total 1970 sunroof Dodge Chargers shipped to the USA market: **175 units**.

- **Base Charger (XH29) – 9.**
- **Charger 500 (XP29) – 54.**
- **Charger R/T (XS29) – 112.**

American Sunroof Corporation (ASC) established a facility in the Detroit area in the late 60's to install Golde style power sunroofs in a select few cars models coming out of the Detroit assembly plants. This caught the attention of Chrysler, and a deal was struck with ASC to install their power sunroof in Dodge Chargers for the 1969 model year. Even with the low production numbers, the option was continued on the 1970 Charger, and expanded to the new Challenger.

Cars that were ordered or designated to have an ASC power sunroof were initially started down the assembly line, then pulled off the line at a certain point to be shipped off to ASC's facility. After ASC installed the power sunroof, the cars were shipped back to the factory where final assembly was completed.

Vinyl tops were required on all of these sunroof cars. This was a time saving measure for ASC, and a cost saving measure for Chrysler. ASC didn't have to be super careful with the metal and paint around the sunroof area during the installation. Once the sunroof assembly was installed, they just covered up any scratches and dings with a little filler and primer, and then installed the vinyl roof.

With all the extra logistics involved in offering a sunroof, you might think that this option was an expensive one. You would be correct! The price tag for this factory option was a whopping \$461.45! To put this in perspective, a base 318 Charger sold for \$3109. Heck, the only option more expensive than the sunroof was checking off the box that said "Hemi" (\$648.20).

The option code for the power sunroof is M51, but this code does not appear on the fender tag. What usually appears on the fender tag to identify "factory" power sunroof cars is a special six digit vehicle order number (VON). The VON will start with M99 for "factory" sunroof cars.

Very early in production, a number of identical Dealer Demo cars were produced to showcase many key options. These cars were all R/T SE's painted Hemi Orange, had the Six Pack engine with auto transmission, and came with a Black vinyl top, Black leather interior, Black stripe, Power Windows, Luggage Rack, and the Sunroof. They went out to a few of the bigger dealerships across the country. At least 6 examples are still known to exist.

On the following pages are all the surviving 1970 Dodge Charger sunroof cars that I have run across since I started documenting this rare option. Many thanks to all that have helped me track down these cars - esp. Dan P., Dodge Don, Tan Top, and Sean M.

1970 Charger R/T SE

Paint Top Inter. Engine/Trans
Black Black Black Hemi / 4-Spd
(Mopar Muscle Magazine Article - Fall 1990)



1970 Charger R/T

Paint Top Inter. Engine/Trans
EV2-Hemi Orange Black Black Hemi / Auto
(www.dodgecharger.com forum post)



1970 Charger R/T SE

Paint Top Inter. Engine/Trans
FC7-Plum Crazy Black Black 440-6 / 4-Spd
(Restoration to begin soon)



1970 Charger R/T

Paint Top Inter. Engine/Trans
FC7-Plum Crazy White White 440-6 / 4-Spd
(Brother's Collection)



Photo by: Bill Woessner

1970 Charger R/T

Paint Top Inter. Engine/Trans
FF4-Light Green ? Green 440-6 / 4-Spd
(www.1970chargerregistry.com forum post)



1970 Charger R/T SE

Paint Top Inter. Engine/Trans
EV2-Hemi Orange Black Black 440-6 / Auto
(Run of Dealer Demo cars) #26



1970 Charger R/T SE

Paint Top Inter. Engine/Trans
EV2-Hemi Orange Black Black 440-6 / Auto
(Run of Dealer Demo cars) #32



1970 Charger R/T SE

Paint Top Inter. Engine/Trans
EV2-Hemi Orange Black Black 440-6 / Auto
(Run of Dealer Demo cars) #33



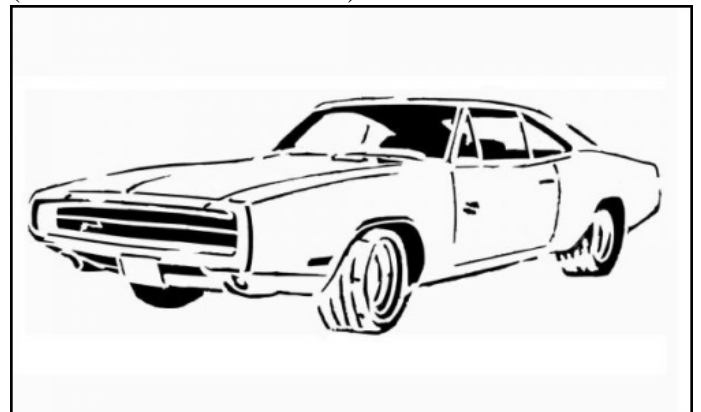
1970 Charger R/T SE

Paint Top Inter. Engine/Trans
EV2-Hemi Orange Black Black 440-6 / Auto
(Run of Dealer Demo cars) #34



1970 Charger R/T SE

Paint Top Inter. Engine/Trans
EV2-Hemi Orange Black Black 440-6 / Auto
(Run of Dealer Demo cars) #35



1970 Charger R/T SE

(This car may or may not still exist)

Paint Top Inter. Engine/Trans
EV2-Hemi Orange Black Black 440-6 / Auto
(Run of Dealer Demo cars) #40



1970 Charger R/T SE

Paint Top Inter. Engine/Trans
EV2-Hemi Orange Black Black 440-6 / Auto
(Run of Dealer Demo cars) #41



1970 Charger R/T SE

Paint Top Inter. Engine/Trans
FK5-Dark Burnt Orng White Black 440 / Auto
(Floyd Garrett Museum in Sevierville, TN)



1970 Charger R/T SE

Paint Top Inter. Engine/Trans
FJ5-Lime Green Black Black 440 / Auto
(Facebook 1969-1975 Sunroof Mopars)



1970 Charger R/T SE

Paint Top Inter. Engine/Trans
Bright Red Black Black 440 / Auto
(Super Stock Magazine Article Car)



1970 Charger R/T SE

Paint Top Inter. Engine/Trans
FT6-Dark Tan White Tan 440 / Auto
(www.1970chargerregistry.com member)



1970 Charger R/T SE

Paint Top Inter. Engine/Trans
FE5-Bright Red Black Black 440 / Auto
(Public Relations Car - Poss the SS Magazine Car)



1970 Charger R/T SE

Paint Top Inter. Engine/Trans
EB7-Dark Blue White Blue 440 / Auto
(MCACN 2016 Reveal car)



Photo by: Bill Woessner

1970 Charger R/T SE

Paint Top Inter. Engine/Trans
FE5-Bright Red Black Black 440 / Auto
(www.1970chargerregistry.com member)



1970 Charger R/T

Paint Top Inter. Engine/Trans
FC7-Plum Crazy White White 440-4 / 4-spd
(Facebook 1969-1975 Sunroof Mopars)



1970 Charger R/T SE

Paint Top Inter. Engine/Trans
EB3-Light Blue Black Black 440 / Auto
(Registry at www.1970chargerregistry.com)



1970 Charger R/T

Paint Top Inter. Engine/Trans
EK2-Go Mango Black Orange 440-4 / Auto
(www.1970chargerregistry.com member)



1970 Charger R/T SE

Paint Top Inter. Engine/Trans
EW1-White White Tan 440 / Auto
(Registry at www.1970chargerregistry.com)



1970 Charger R/T

Paint Top Inter. Engine/Trans
FT6-Dark Tan White Tan 440 / Auto
(www.1970chargerregistry.com member posted)



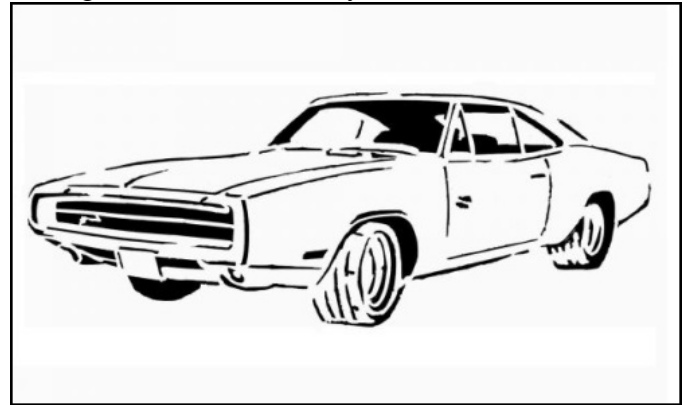
1970 Charger R/T

Paint FY1-Top Banana
Top White
Inter. Tan
Engine/Trans 440-4 / Auto
(MCACN 2016 reveal car)



1970 Charger R/T

Paint EV2-Hemi Orange
Top ?
Inter. Black
Engine/Trans 440 / Auto
(Being Restored in Norway)



1970 Charger R/T

Paint FM3-Panther Pink
Top White
Inter. White
Engine/Trans 440 / Auto
(Registry at www.1970chargerregistry.com)



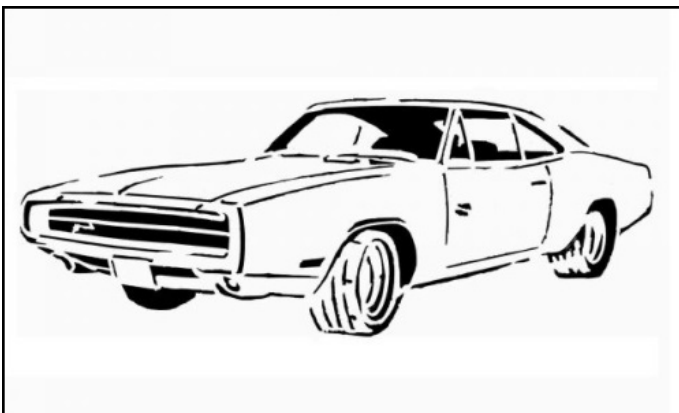
1970 Charger 500 SE

Paint FF4-Light Green
Top White
Inter. Green
Engine/Trans 383-4 / Auto
(Formerly owned by 1970cr.com member)



1970 Charger R/T

Paint EK2-Go Mango
Top ?
Inter. Orang
Engine/Trans 440-4 / Auto
Last seen in the 90s in Illinois - Exec Demo Car



1970 Charger 500 SE

Paint 999-FT8 Walnut
Top Gator
Inter. Tan
Engine/Trans 383-4 / Auto
(www.1970chargerregistry.com member)



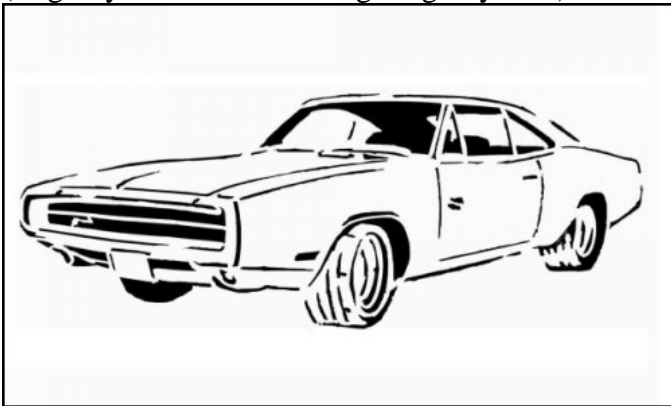
1970 Charger 500 SE

Paint EB5-Bright Blue Top Black Inter. Blue Engine/Trans 383-4 / Auto
(Fresh sheet metal has been installed)



1970 Charger 500 SE

Paint FE5-Bright Red Top ? Inter. Black Engine/Trans 318 / Auto
(Registry at www.1970chargerregistry.com)



1970 Charger 500

Paint FC7-Plum Crazy Top White Inter. White Engine/Trans 318-2 / Auto
(Project out of Wisconsin - sold in Texas)



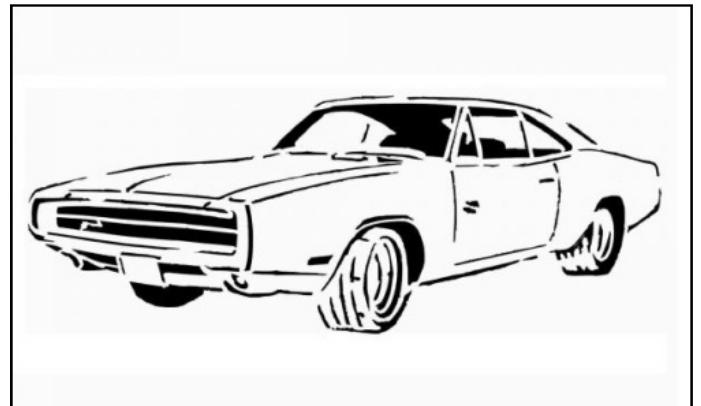
1970 Charger

Paint Orange Top ? Inter. ? Engine/Trans ?
(Facebook 1969-1975 Sunroof Mopars)



1970 Charger

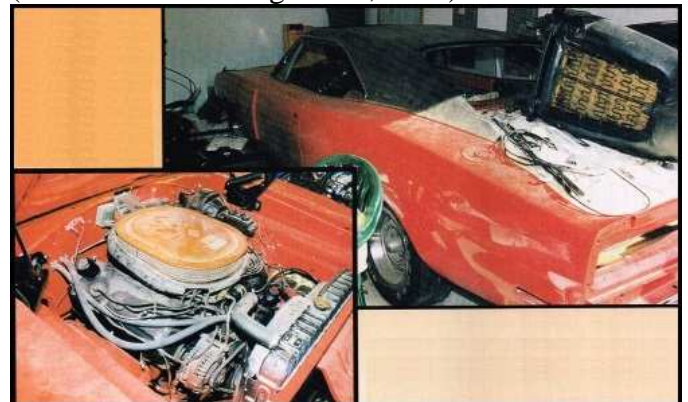
Paint EF8-Dark Green Top ? Inter. ? Engine/Trans ?
Private collector in Saskatchewan



1970 Charger R/T

(Sunroof was Added)

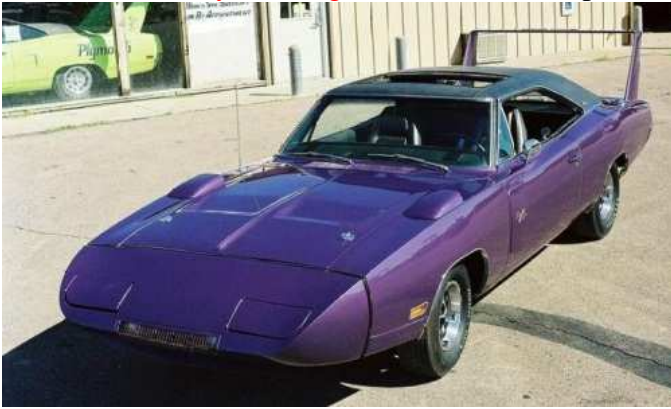
Paint Red Top Black Inter. Black Engine/Trans Hemi / 4-spd
(SnoBar Auction August 1st, 2017)



1970 Charger R/T SE Daytona Pkg

| Paint | Top | Inter. | Engine/Trans |
|----------------|-------|--------|---------------|
| FC7-Plum Crazy | Black | Black | 440-6 / 4-Spd |

(Sunroof and Daytona Pkg added at dealership)



1970 Charger R/T SE

| Paint | Top | Inter. | Engine/Trans |
|-------|-------|--------|--------------|
| Blue | White | ? | 440-4 / Auto |

(Non-OEM sunroof added)

